

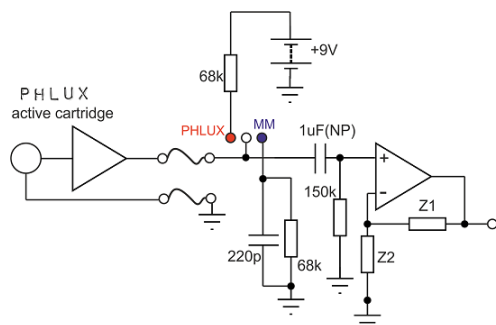
PHLUX - II active phono cartridge

Introduction

The Phædrus Audio PHLUX active phono cartridges represent a new development in phono cartridge technology in which a moving-magnet motor system is buffered by a miniature impedance-converter. PHLUX-II is the second-generation product and replaces the original PHLUX.

Preamp considerations

The miniature impedance-converter which buffers the moving-magnet motor is supplied power via the signal wires. By this means, the PHLUX-II may be fitted to any turntable and arm combination without modifications to the wiring. A suitable preamplifier circuit to support the PHLUX II cartridge (or a standard MM cartridge) is illustrated below.

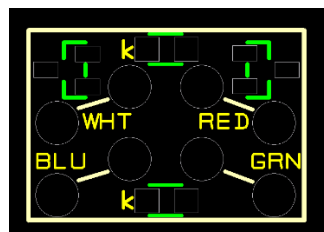


Fitting the PHLUX II cartridge

The PHLUX II cartridge has a standard ½ inch mount. The body is tapped M2.5, so no nuts are necessary. This makes fitting the cartridge very simple. Suitable, non-ferrous bolts are supplied with the cartridge are used to fix the PHLUX-II into its shipping box. Loosen them and remove the cartridge and fit into the tonearm or headshell. Be careful not to overtighten these bolts.

Wiring

Connect the tonearm flying leads to the outer pins of the rear PHLUX-II PCB according to the colours indicated on the PCB silkscreen (illustrated below).



Note that blue LEDs will light at the top and bottom of the rear of the PHLUX-II once the phantom power is supplied. It is recommended that power be left applied at all times. The power consumption is less than 2milliwatts.

Stylus guard

The PHLUX II is supplied with a stylus guard for shipping and installation. *It is not necessary to refit this guard once the cartridge has been installed in the tonearm or headshell.*

Specification Phædrus Audio PHLUX-II

Output voltage @ 1kHz, 5cm/sec.: 3.5mV
Channel balance: Within 2dB
Channel separation @ 1kHz: >26dB
Frequency response: ±1dB 40Hz to 15kHz
Load resistance: >100kΩ
Load capacitance: Minimal for best stability margin
Stylus: 0.0003" x 0.0007" elliptical diamond
Tracking force range: 1.5 to 2.5g (15 to 25mN)
Tracking force recommended: 2g (20mN)
Mount: ½ inch; body tapped M2.5
Vertical tracking angle: 20°
Output impedance: 300Ω
Weight: 8g



Phaedrus Audio reserves the right to alter this specification without notice. Note that the PHLUX active cartridge is the subject of UK Patent application GB1517805.6

